



The New **DS2400N** laser reader takes advantage of Datalogic's success in 1D bar code reading, satisfying the demanding application needs of the largest manufacturers worldwide. DS2400N provides greater profitability and productivity in the most common warehousing, shop floor and OEM applications.

■ **PERFORMANCE**

The DS2400N grants high reliability when reading difficult bar codes thanks to its self-optimizing reading performance in any condition and using ACB™ reconstruction technology. DS2400N offers an extremely wide depth of field and large reading area in a very compact and robust housing with IP65 protection.

■ **ID-NET™**

The DS2400N is equipped with a built-in ID-NET™ interface, used for high-speed scanner interconnection.

ID-NET™ allows faster and more efficient data collection without the need for an external multiplexer device. This translates into overall cost reduction and easier system wiring.

■ **X-PRESS™ HMI**

X-PRESS™ is the intuitive Human Machine Interface designed to improve ease of installation and maintenance. Status and diagnostic information are clearly presented by means of a five LED bar-graph, whereas the single multi-function key gives immediate access to relevant functions such as Test Mode (for bar code verification), AutoLearn (for bar code self-detection) and Auto-Setup (for scanner self-adjusting). This makes any user's work easier.

■ **GENIUS™**

The DS2400N scanner can be easily programmed through the intuitive and multi-language Genius™ SW tool. Thanks to the wizard approach and graphic add-ons, the scanner configuration is done rapidly.



VISION

HIGHLIGHTS

- Embedded ID-NET™ high speed connectivity to simplify data collection and cluster wiring
- Intuitive X-PRESS™ interface for quick scanner installation and troubleshooting
- Easy setup through multi-language Genius™ SW tool
- ACB™ advanced code builder technology improves the read rate on damaged bar codes
- Motor on/off and motor speed SW programmable for energy saving
- IP65 rugged industrial housing

APPLICATIONS

Automated warehousing

- Conveyor sorting
- Picking systems

Automated shopfloor

- Items and parts tracking
- Process control and Packaging
- Packaging and compliance

OEM

- Document Handling
- Print & Apply
- Automatic chemical and biomedical analysis machines

TECHNICAL DATA

Dimensions	84 x 68 x 34 mm (3.31 x 2.68 x 1.34 in)
Weight	330 g (11.6 oz)
Case material	Aluminum
Operating temp.	0 to 45 °C (32 to 113 °F)
Storage temp.	-20 to 70 °C (-4 to 158 °F)
Humidity	90% non condensing
Vibration resistance	IEC 68-2-6 test FC 1.5 mm; 10 to 55 Hz; 2 hours on each axis
Shock resistance	IEC 68-2-27 test EA 30 G; 11 ms; 3 shocks on each axis
Protection class	IP65
Scanning speed	600 to 1000 scans/sec (SW programmable)
Max. Resolution	Up to 0.20 mm (8 mils)
Max. Reading distance	Up to 600 mm (23.6 in) on 0.50 mm (20 mils) bar codes
Max. Depth of field	Up to 400 mm (15.7 in) on 0.50 mm (20 mils) bar codes
Aperture angle	50 degrees
Raster aperture	24 mm (0.95 in) at 500 mm (20 in)
Readable codes	Code 2/5, Code 39, Code 93, Code 128, EAN/UPC, EAN 128, Codabar, Pharmacode, ISBN128
Multilabel reading	Up to 10 different symbologies during the same reading phase
Comm. Interfaces	Main port RS232/RS485 SW selectable up to 115.2 kbps Aux. port RS232 up to 115.2 kbps ID-NET™ port up to 1 Mbps
Device programming	Genius™ SW configuration tool X-PRESS™ human machine interface Serial host mode programming sequences
Operating modes	'On line', 'Serial On-line', 'Automatic', 'Continuous', 'Test', 'Verifier'
Input signals	External Trigger (optocoupled, NPN/PNP), IN2 (not optocoupled, NPN only)
Output signals	OUT1, OUT2 SW programmable event driven (optocoupled, NPN/PNP)
Laser classification	IEC 825-1 Class 2; CDRH Class II
Laser control	Security system to turn laser off in case of motor slow down or failure
Motor control	Motor ON/OFF command string and motor speed SW programmable
Power supply	10 to 30 VDC
Power consumption	5 W

MODELS

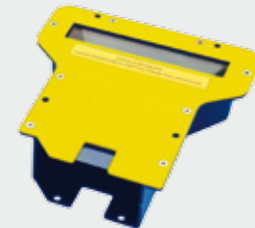
ORDER NO.	DESCRIPTION
930181379	DS2400N-0200 Short range, LINEAR, NSC
930181380	DS2400N-0210 SHORT RANGE, RASTER, NSC
930181381	DS2400N-1200 MEDIUM RANGE, LINEAR, NSC
930181382	DS2400N-1210 MEDIUM RANGE, RASTER, NSC
930181383	DS2400N-2200 LONG RANGE, LINEAR, NSC
930181384	DS2400N-2210 LONG RANGE, RASTER, NSC

ACCESSORIES

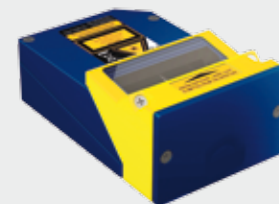
ORDER NO.	DESCRIPTION
93ACC1839	OM2000N OSCILLATING MIRROR, NSC
93A201108	GFC-200 85° MIRROR CONTACT READING, NSC
93A201000	GFC-2100 90° Reading Mirror



GFC-2100 90° Mirror Solution



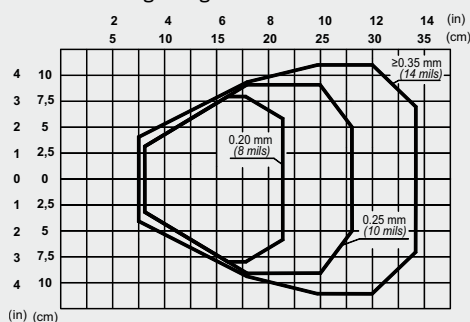
GFC-200 Contact Reading Mirror



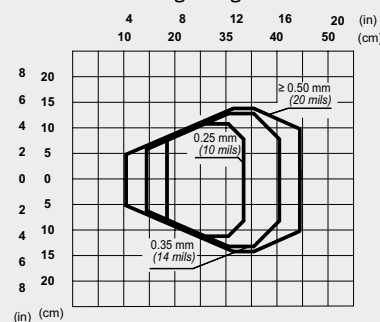
OM2000 Oscillating Mirror

READING DIAGRAMS

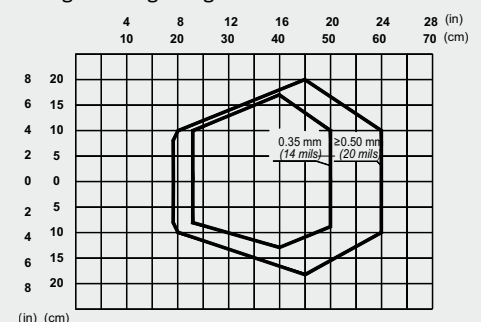
(Short Reading Range)



(Medium Reading Range)



(Long Reading Range)



Rev. 04, 05/2013

